

# HEAVY DUTY STAINLESS STEEL RANGE

The unbreakable stainless steel Heavy Duty convex mirror is ideal in situations where vandalism is a problem. This tough and durable mirror can withstand hard knocks in industrial situations or where projectile objects, such as rocks, are an issue.



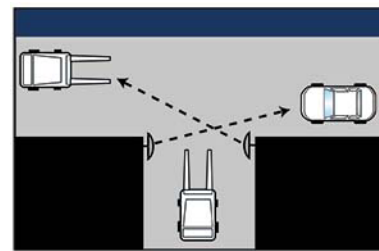
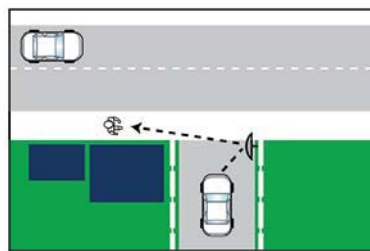
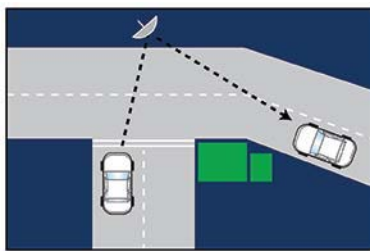
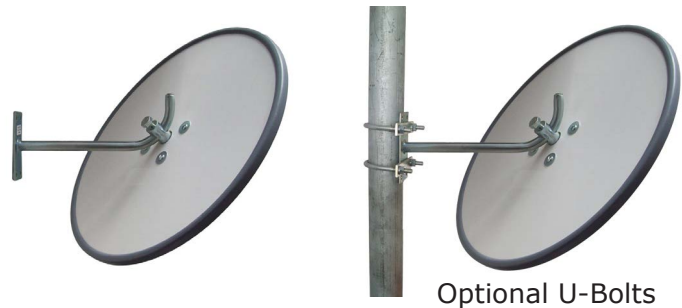
## SPECIFICATIONS:

PART NO.	SIZE	* VIEW DISTANCE	MIRROR FACE	BACK	BRACKET LENGTH	MOUNTING PLATE	MOUNTING HOLES
66062S	24"	Up to 140'	.9mm Stainless Steel	10mm Vinyl	13"	2 3/4 x 6"	4 x 23/64"
66087S	32"	Up to 200'	.9mm Stainless Steel	10mm Vinyl	17"	4 x 8"	4 x 7/16"
66445S	40"	Up to 250'	1mm Stainless Steel	10mm Vinyl	17"	4 x 8"	4 x 7/16"





\* View Distance is the combined distance from the observer to the mirror PLUS the distance from the mirror to the area being viewed.

### SUITABLE USES:

- Vandal Prone Areas
- Industrial Safety
- Outdoor Surveillance and Security
- Driveways and Carparks
- Security Checkpoints and Border Control
- Livestock Observation and Heat Detection



### SOCIAL MEDIA

-  Duravision
-  Benmirr1
-  duravision\_convex\_mirrors
-  bennett-mirror-technologies



### CONTACT US

West Bridgewater  
MA 02379  
T: 781-344-8459  
E: mirrors@bennettmirror.com  
www.duravision.net



### 5 YEAR WARRANTY

Manufactured using the highest quality materials to provide a higher level of safety and longer lasting products