

PRO SERIES STAINLESS STEEL ROUND RANGE

Stainless Steel Pro Series circular traffic mirrors are virtually unbreakable and feature red reflective tape around the edges for enhanced visibility and added safety. The extra strong clamp bracket for pole mounting can withstand extreme weather and strong winds. The highly polished stainless steel mirror face is ideal for driveways and roads where vandalism or projectile objects are a problem. The optional Wall Mounting Adaptor is available to mount the clamp bracket to a wall or flat surface.



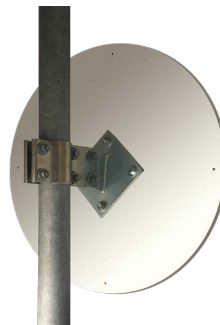
SPECIFICATIONS:

PART NO.	SIZE	* VIEW DISTANCE	MIRROR FACE	BACK	POLE FITTINGS	BRACKET LENGTH
16666C	600mm	Up to 42m	.7mm Stainless Steel	20mm Celuka	75mm Clamp	250mm
16687C	800mm	Up to 60m	.7mm Stainless Steel	20mm Celuka	75mm Clamp	250mm
16695C	1000mm	Up to 65m	1mm Stainless Steel	20mm Celuka	75mm Clamp	250mm

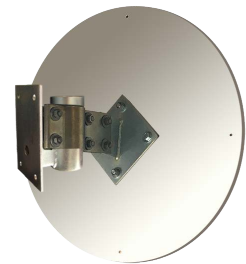
* View Distance is the combined distance from the observer to the mirror PLUS the distance from the mirror to the area being viewed.

SUITABLE USES:

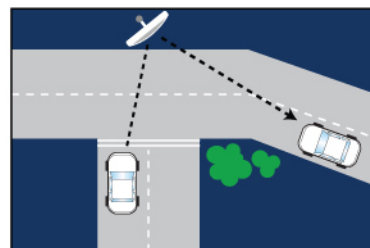
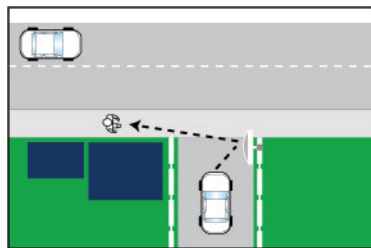
- All weather conditions
- Coastal environments
- Vandal prone areas
- Industrial machinery
- High speed traffic
- High visibility
- Pedestrian crossing
- Public buildings and carparks







Pole Not Included



Optional Wall Adaptor



SOCIAL MEDIA

-  Duravision
-  Benmirr1
-  duravision_convex_mirrors
-  bennett-mirror-technologies



CONTACT US

PO Box 2163, Tauranga
New Zealand
T: +64 7 9285380
E: mirrors@bmt.nz
www.duravision.net



5 YEAR WARRANTY

Manufactured using the highest quality materials to provide a higher level of safety and longer lasting products