

## PRO SERIES ACRYLIC ROUND RANGE

When a high visibility, general purpose traffic mirror with a superior image is required, the Pro Series Circular mirror is the ideal choice. In addition the back is made from a 100% UV stabilised advanced plastic composite, ensuring superior longevity and strength. The classic styling and enhanced safety features make this the ultimate traffic mirror.



### SPECIFICATIONS:

PART NO.	SIZE	* VIEW DISTANCE	MIRROR FACE	BACK	POLE FITTINGS	BRACKET LENGTH
18666C	600mm	Up to 42m	2mm Acrylic	Moulded ASA Vinyl	75mm Clamp	250mm
18687C	800mm	Up to 46m	2mm Acrylic	Moulded ASA Vinyl	75mm Clamp	250mm
18695C	1000mm	Up to 56m	2mm Acrylic	Moulded ASA Vinyl	75mm Clamp	250mm

\* View Distance is the combined distance from the observer to the mirror PLUS the distance from the mirror to the area being viewed.

#### SUITABLE USES:

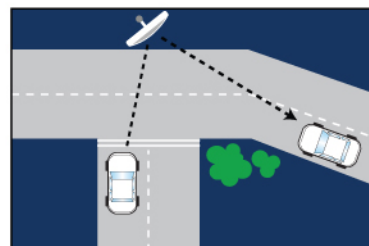
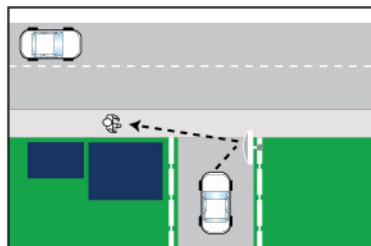
- Road and Traffic Safety
- High Visibility
- Driveways and Carparks
- Outdoor Security around Buildings
- Security Checkpoints and Border Control







Pole Not Included



Optional Wall Adaptor



#### SOCIAL MEDIA

-  Duravision
-  Benmirr1
-  duravision\_convex\_mirrors
-  bennett-mirror-technologies



#### CONTACT US

PO Box 2163, Tauranga  
New Zealand  
T: +64 7 9285380  
E: mirrors@bmt.nz  
www.duravision.net



#### 5 YEAR WARRANTY

Manufactured using the highest quality materials to provide a higher level of safety and longer lasting products